

**PCE**

Connection  
to the future



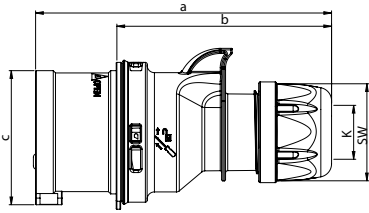
# Event technology

**MIDNIGHT-SERIES**

**Plugs / Connectors / Sockets / Distribution boxes**

# Event technology MIDNIGHT-SERIES

## Plug IP44 SHARK



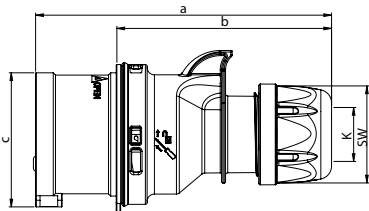
	16 Amp			32 Amp		
	3	4	5	3	4	5
<b>Poles</b>	3	4	5	3	4	5
<b>a [mm]</b>	122	128	134	150	150	155
<b>b [mm]</b>	86	92	98	104	104	109
<b>c [mm]</b>	47	53	61	63	63	70
<b>K_cable Ø [mm]</b>	6-15	6-15	8-16	11,5-20	11,5-20	11,5-22
<b>Wire flexible [mm<sup>2</sup>]</b>	1-2,5			2,5-6		
<b>Contact screws [Ncm]</b>	100			110		
<b>SW [mm]</b>	42	42	42	50	50	50
<b>Weight [g]</b>	109	128	151	181	201	232

- with screw terminals
- housing material: PA6
- contacts: brass
  - to order nickel-plated contacts please add a "v" e.g. 015-6xv

**IP44** splashproof

also available in IP67

## Plug IP44 SHARK TT



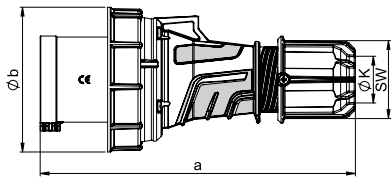
	16 Amp			32 Amp		
	3	4	5	3	4	5
<b>Poles</b>	3	4	5	3	4	5
<b>a [mm]</b>	122	128	134	150	150	155
<b>b [mm]</b>	86	92	98	104	104	109
<b>c [mm]</b>	47	53	61	63	63	70
<b>K_cable Ø [mm]</b>	6-15	6-15	8-16	11,5-20	11,5-20	11,5-22
<b>Wire flexible [mm<sup>2</sup>]</b>	1-2,5			2,5-6		
<b>SW [mm]</b>	42	42	42	50	50	50
<b>Weight [g]</b>	111	132	156	186	206	241

- screwless connection technology
- housing material: PA6
- contacts: brass
  - to order nickel-plated contacts please add a "v" e.g. 015-6TTxv

**IP44** splashproof

also available in IP67

## Plug IP67 POWER TWIST

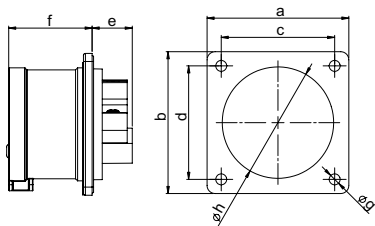


	63 Amp			125 Amp		
	3	4	5	3	4	5
<b>Poles</b>	3	4	5	3	4	5
<b>a [mm]</b>	250	250	250	270	270	270
<b>b [mm]</b>	115	115	115	131	131	131
<b>c [mm]</b>	47	53	61	63	63	70
<b>K_cable Ø [mm]</b>	14,5-36	14,5-36	14,5-36	22,5-50	22,5-50	22,5-50
<b>Wire flexible [mm<sup>2</sup>]</b>	6-16			16-50		
<b>Contact screws [Ncm]</b>	200			450		
<b>SW [mm]</b>	61	61	61	81	81	81
<b>Weight [g]</b>	574	621	670	956	1064	1169

- Contact frame with screws (63A) for 125A with hexagon socket screws
- housing material: PA6
- contacts: nickel-plated contacts, with pilot contact

**IP66/67** watertight

## Flanged plug straight IP44

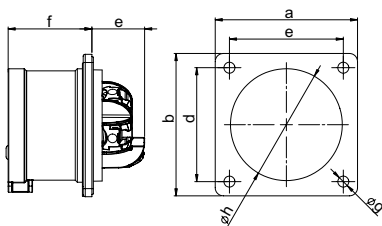


	16 Amp			32 Amp		
	3	4	5	3	4	5
<b>Poles</b>	3	4	5	3	4	5
<b>Flange a x b [mm]</b>	70	70	70	70	70	70
<b>Fixing center c x d [mm]</b>	56	56	56	56	56	56
<b>e [mm]</b>	21	21	20	21	21	21
<b>f [mm]</b>	42	42	42	51	51	51
<b>g [mm]</b>	5,5	5,5	5,5	5,5	5,5	5,5
<b>h [mm]</b>	43	43	55	55	55	55
<b>Wire flexible [mm<sup>2</sup>]</b>	1-2,5			2,5-6		
<b>Wire solid [mm<sup>2</sup>]</b>	1-4			2,5-10		
<b>Contact screws [Ncm]</b>	100			110		
<b>Weight [g]</b>	86	101	118	125	145	165

- with screw terminals
- housing material: PA6
- contacts: brass
  - to order nickel-plated contacts please add a "v" e.g. 615-6xv
- According to EN 60309: For correct use a locking device has to be provided

**IP44** splashproof

## Flanged plug straight IP44 TT



	16 Amp		32 Amp	
	3	5	4	5
<b>Poles</b>	3	5	4	5
<b>Flange a x b [mm]</b>	70	70	70	70
<b>Fixing center c x d [mm]</b>	56	56	56	56
<b>e [mm]</b>	26	26	29	29
<b>f [mm]</b>	42	42	51	51
<b>g [mm]</b>	5,5	5,5	5,5	5,5
<b>h [mm]</b>	43	55	55	55
<b>Wire flexible [mm<sup>2</sup>]</b>	1-2,5		2,5-6	
<b>Wire solid [mm<sup>2</sup>]</b>	1-4		2,5-10	
<b>Weight [g]</b>	89	122	151	172

- screwless connection technology
- housing material: PA6
- contacts: brass
  - to order nickel-plated contacts please add a "v" e.g. 615-6TTxv
- According to EN 60309: For correct use a locking device has to be provided

**IP44** splashproof

Amp.	Poles	pack. unit	230V~	400V~
			50/60Hz 3p=6h 4p+5p=9h	50/60Hz 3p=9h 4p+5p=6h
			Cat.No.	Cat.No.

16	3	10
16	4	10
16	5	10
32	3	10
32	4	10
32	5	10

013-6x	014-6x
	015-6x
023-6x	024-6x
	025-6x



023-6x

16	3	10
16	4	10
16	5	10
32	3	10
32	4	10
32	5	10

013-6TTx	014-6TTx
	015-6TTx
023-6TTx	024-6TTx
	025-6TTx



015-6TTx

63	3	2
63	4	2
63	5	2
125	3	2
125	4	2
125	5	2

033-6xs	034-6xs
	035-6xs
043-6xs	044-6xs
	045-6xs



035-6xs

with flange 70 x 70 - fixing center 56 x 56

16	3	10
16	4	10
16	5	10
32	3	10
32	4	10
32	5	10

613-6x	614-6x
	615-6x
623-6x	624-6x
	625-6x



625-6x

with flange 70 x 70 - fixing center 56 x 56

16	3	10
16	5	10
32	4	10
32	5	10

613-6TTx	615-6TTx
	624-6TTx
	625-6TTx



625-6TTx

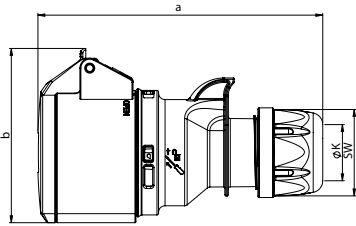
Minimum order quantity: 50 pcs.



# Event technology MIDNIGHT-SERIES

## Connector IP44

### SHARK



	16 Amp			32 Amp		
	3	4	5	3	4	5
<b>Poles</b>	3	4	5	3	4	5
<b>a [mm]</b>	133	138	145	161	161	168
<b>b [mm]</b>	76	80	89	91	94	100
<b>K cable Ø [mm]</b>	6-15	6-15	8-16	11,5-20	11,5-20	11,5-22
<b>Wire flexible [mm<sup>2</sup>]</b>	1-2,5			2,5-6		
<b>Contact screws [Ncm]</b>	100			110		
<b>SW [mm]</b>	42	42	42	50	50	50
<b>Weight [g]</b>	134	161	180	228	244	270

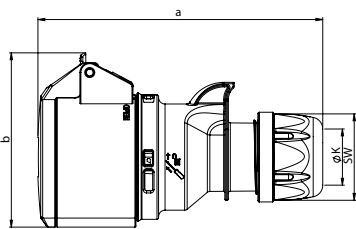
- with screw terminals
- housing material: PA6
- contacts: brass
  - to order nickel-plated contacts please add a "v" e.g. 215-6xv

**IP44** splashproof

also available in IP67

## Connector IP44

### SHARK TT



	16 Amp			32 Amp		
	3	4	5	3	4	5
<b>Poles</b>	3	4	5	3	4	5
<b>a [mm]</b>	133	138	145	161	161	168
<b>b [mm]</b>	76	82	89	94	94	100
<b>K cable Ø [mm]</b>	6-15	6-15	8-16	11,5-20	11,5-20	11,5-22
<b>Wire flexible [mm<sup>2</sup>]</b>	1-2,5			2,5-6		
<b>SW [mm]</b>	42	42	42	50	50	50
<b>Weight [g]</b>	136	161	193	228	243	271

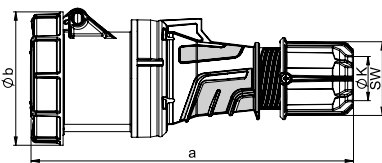
- screwless connection technology
- housing material: PA6
- contacts: brass
  - to order nickel-plated contacts please add a "v" e.g. 215-6TTxv

**IP44** splashproof

also available in IP67

## Connector IP66/67

### POWER TWIST



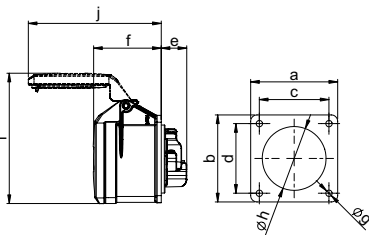
	63 Amp			125 Amp		
	3	4	5	3	4	5
<b>Poles</b>	3	4	5	3	4	5
<b>a [mm]</b>	269	269	269	287	287	287
<b>b [mm]</b>	114	114	114	124	124	124
<b>K cable Ø [mm]</b>	14,5-36	14,5-36	14,5-36	22,5-50	22,5-50	22,5-50
<b>Wire flexible [mm<sup>2</sup>]</b>	6-16			16-50		
<b>Contact screws [Ncm]</b>	200			450		
<b>SW [mm]</b>	61	61	61	81	81	81
<b>Weight [g]</b>	673	714	772	1060	1167	1266

- Contact frame with screws for 125A with hexagon socket screws
- housing material: PC/ABS
- contacts: brass with lamellar contact CuBe
  - to order with pilot contact please add a „5“ e.g. 2335-6xs
  - to order with pilot contact system (PCS) please add a „6“ e.g. 2336-6xs

**IP66/67** watertight

## Flanged socket straight IP44

	16 Amp			32 Amp		
	3	4	5	3	4	5
<b>Poles</b>	3	4	5	3	4	5
<b>Flange a x b [mm]</b>	70	70	70	70	70	70
<b>Fixing center c x d [mm]</b>	56	56	56	56	56	56
<b>e [mm]</b>	21	21	21	23	23	23
<b>f [mm]</b>	55	55	55	67	67	67
<b>g [mm]</b>	5,5	5,5	5,5	5,5	5,5	5,5
<b>h [mm]</b>	43	45	55	55	55	58
<b>i [mm]</b>	87	101	105	112	112	108
<b>j [mm]</b>	101	101	107	122	122	136
<b>Wire flexible [mm<sup>2</sup>]</b>	1-2,5			2,5-6		
<b>Wire solid [mm<sup>2</sup>]</b>	1-4			2,5-10		
<b>Contact screws [Ncm]</b>	100			110		
<b>Weight [g]</b>	115	127	141	162	178	206



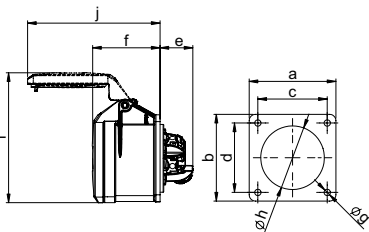
- with screw terminals
- housing material: PA6
- contacts: brass
  - to order nickel-plated contacts please add a "v" e.g. 315-6xv

**IP44** splashproof  
**IP44/54** 16/3; 16/5 and 32/5 are splash- and dustproof

also available in IP67

## Flanged socket straight IP44

	16 Amp			32 Amp		
	3	4	5	3	4	5
<b>Poles</b>	3	4	5	3	4	5
<b>Flange a x b [mm]</b>	70	70	70	70	70	70
<b>Fixing center c x d [mm]</b>	56	56	56	56	56	56
<b>e [mm]</b>	27	27	27	27	27	27
<b>f [mm]</b>	55	55	55	67	67	67
<b>g [mm]</b>	5,5	5,5	5,5	5,5	5,5	5,5
<b>h [mm]</b>	43	45	55	55	55	58
<b>i [mm]</b>	87	101	105	112	112	108
<b>j [mm]</b>	101	101	107	122	122	136
<b>Wire flexible [mm<sup>2</sup>]</b>	1-2,5			2,5-6		
<b>Wire solid [mm<sup>2</sup>]</b>	1-4			2,5-10		
<b>Weight [g]</b>	117	128	146	161	178	207



- screwless connection technology
- housing material: PA6
- contacts: brass
  - to order nickel-plated contacts please add a "v" e.g. 315-6TTxv

**IP44** splashproof  
**IP44/54** 16/3; 16/5 and 32/5 are splash- and dustproof

also available in IP67

Amp.	Poles	pack. unit	230V~	400V~
			50/60Hz 3p=6h 4p+5p=9h	50/60Hz 3p=9h 4p+5p=6h
			Cat.No.	Cat.No.

16	3	10
16	4	10
16	5	10
32	3	10
32	4	10
32	5	10

213-6x	214-6x 215-6x		
		223-6x	224-6x 225-6x



223-6x

16	3	10
16	4	10
16	5	10
32	3	10
32	4	10
32	5	10

213-6TTx	214-6TTx 215-6TTx		
		223-6TTx	224-6TTx 225-6TTx



215-6TTx

63	3	2
63	4	2
63	5	2
125	3	2
125	4	2
125	5	2

233-6xs	234-6xs 235-6xs		
		243-6xs	244-6xs 245-6xs



235-6xs

with flange 70 x 70 - fixing center 56 x 56

16	3	10
16	4	10
16	5	10
32	3	10
32	4	10
32	5	10

313-6x	314-6x 315-6x		
		323-6x	324-6x 325-6x



315-6x

with flange 70 x 70 - fixing center 56 x 56

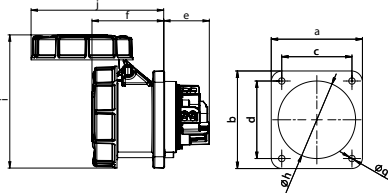
16	3	10
16	4	10
16	5	10
32	3	10
32	4	10
32	5	10

313-6TTx	314-6TTx 315-6TTx		
		323-6TTx	324-6TTx 325-6TTx



313-6TTx

# Event technology MIDNIGHT-SERIES



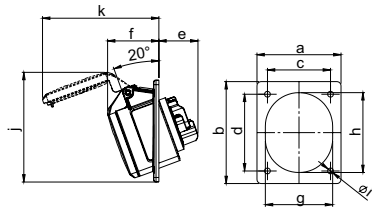
## Flanged socket straight 66/67

### POWER TWIST

	63 Amp			125 Amp		
	3	4	5	3	4	5
<b>Poles</b>	3	4	5	3	4	5
<b>Flange a x b [mm]</b>	100	100	100	120	120	120
<b>Fixing center c x d [mm]</b>	80	80	80	100	100	100
<b>e [mm]</b>	50	50	50	48	48	48
<b>f [mm]</b>	80	80	80	101	101	101
<b>g [mm]</b>	7	7	7	8	8	8
<b>h [mm]</b>	85	85	85	90	90	90
<b>i [mm]</b>	147	147	147	159	159	159
<b>j [mm]</b>	146	146	146	179	179	179
<b>Wire flexible [mm<sup>2</sup>]</b>	6-16			16-50		
<b>Wire solid [mm<sup>2</sup>]</b>	6-25			16-70		
<b>Contact screws [Ncm]</b>	200			450		
<b>Weight [g]</b>	488	533	587	752	890	986

- Contact frame with screws (63A) for 125A with hexagon socket screws
- housing material: PA6
- contacts: brass with lamellar contact CuBe
  - to order with pilot contact please add a „5“ e.g. 3335-6xs
  - to order with pilot contact system (PCS) please add a „6“ e.g. 3336-6xs

**IP66/67** watertight



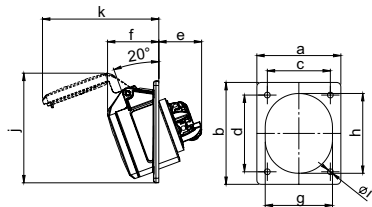
## Flanged socket sloping IP44

	16 Amp			32 Amp		
	3	4	5	3	4	5
<b>Poles</b>	3	4	5	3	4	5
<b>Flange a [mm]</b>	80	80	80	80	80	80
<b>Flange b [mm]</b>	97	97	97	97	97	97
<b>Fixing center c [mm]</b>	60	60	60	60	60	60
<b>Fixing center d [mm]</b>	73	73	73	73	73	73
<b>e [mm]</b>	38	38	38	48	48	48
<b>f [mm]</b>	47	47	49	54	54	55
<b>g [mm]</b>	51	56	65	65	65	70
<b>h [mm]</b>	61	67	76	75	75	84
<b>i [mm]</b>	5,5	5,5	5,5	5,5	5,5	5,5
<b>j [mm]</b>	97	103	105	105	105	99
<b>k [mm]</b>	99	104	111	119	119	130
<b>Wire flexible [mm<sup>2</sup>]</b>	1-2,5			2,5-6		
<b>Wire solid [mm<sup>2</sup>]</b>	1-4			2,5-10		
<b>Contact screws [Ncm]</b>	100			110		
<b>Weight [g]</b>	116	132	154	166	182	214

- with screw terminals
- housing material: PA6
- contacts: brass
  - to order nickel-plated contacts please add a "v" e.g. 415-6xv

**IP44** splashproof  
**IP44/54** 16/3; 16/5 and 32/5 are splash- and dustproof

also available in IP67



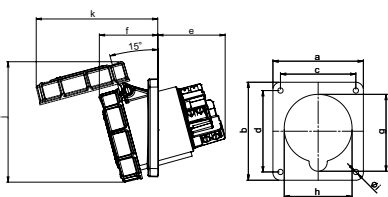
## Flanged socket sloping IP44 TT

	16 Amp			32 Amp		
	3	4	5	3	4	5
<b>Poles</b>	3	4	5	3	4	5
<b>Flange a [mm]</b>	80	80	80	80	80	80
<b>Flange b [mm]</b>	97	97	97	97	97	97
<b>Fixing center c [mm]</b>	60	60	60	60	60	60
<b>Fixing center d [mm]</b>	73	73	73	73	73	73
<b>e [mm]</b>	41	41	41	48	48	48
<b>f [mm]</b>	47	47	49	54	54	55
<b>g [mm]</b>	51	56	65	65	65	70
<b>h [mm]</b>	61	67	76	75	75	84
<b>i [mm]</b>	5,5	5,5	5,5	5,5	5,5	5,5
<b>j [mm]</b>	97	103	105	105	105	99
<b>k [mm]</b>	99	104	111	119	119	130
<b>Wire flexible [mm<sup>2</sup>]</b>	1-2,5			2,5-6		
<b>Wire solid [mm<sup>2</sup>]</b>	1-4			2,5-10		
<b>Weight [g]</b>	119	133	158	165	182	215

- screwless connection technology
- housing material: PA6
- contacts: brass
  - to order nickel-plated contacts please add a "v" e.g. 415-6TTxv

**IP44** splashproof  
**IP44/54** 16/3; 16/5 and 32/5 are splash- and dustproof

also available in IP67



## Flanged socket sloping IP67

### POWER TWIST

	63 Amp			125 Amp		
	3	4	5	3	4	5
<b>Poles</b>	3	4	5	3	4	5
<b>Flange a [mm]</b>	100	100	100	120	120	120
<b>Flange b [mm]</b>	112	112	112	130	130	130
<b>Fixing center c [mm]</b>	80	80	80	100	100	100
<b>Fixing center d [mm]</b>	88	88	88	108	108	108
<b>e [mm]</b>	64	64	64	92	92	92
<b>f [mm]</b>	80	80	80	77	77	77
<b>g [mm]</b>	92	92	92	102	102	102
<b>h [mm]</b>	82	82	82	90	90	90
<b>i [mm]</b>	7	7	7	7	7	7
<b>j [mm]</b>	148	148	148	160	160	160
<b>k [mm]</b>	154	154	154	162	162	162
<b>l [mm]</b>	154	154	154	162	162	162
<b>Wire flexible [mm<sup>2</sup>]</b>	6-16			16-50		
<b>Wire solid [mm<sup>2</sup>]</b>	6-25			16-70		
<b>Contact screws [Ncm]</b>	200			450		
<b>Weight [g]</b>	495	540	595	804	896	995

- Contact frame with screws (63A) for 125A with hexagon socket screws
- housing material: PA6
- contacts: brass with lamellar contact CuBe
  - to order with pilot contact please add a „5“ e.g. 4335-6xs
  - to order with pilot contact system (PCS) please add a „6“ e.g. 4336-6xs

**IP67** watertight

230V~	400V~
50/60Hz 3p=6h 4p+5p=9h	50/60Hz 3p=9h 4p+5p=6h
Cat.No.	Cat.No.

Amp.	Poles	pack. unit	Cat.No.	Cat.No.
<b>with flange 100 x 100 - fixing center 80 x 80</b>				
63	3	2	333-6xs	
63	4	2		334-6xs
63	5	2		335-6xs
<b>with flange 120 x 120 - fixing center 100 x 100</b>				
125	3	2	343-6xs	
125	4	2		344-6xs
125	5	2		345-6xs



335-6xs

<b>with flange 80 x 97 - fixing center 60 x 73</b>				
16	3	10	413-6f8x	
16	4	10		414-6f8x
16	5	10		415-6x
32	3	10	423-6x	
32	4	10		424-6x
32	5	10		425-6x



415-6x

<b>with flange 80 x 97 - fixing center 60 x 73</b>				
16	3	10	413-6TTf8x	
16	4	10		414-6TTf8x
16	5	10		415-6TTx
32	3	10	423-6TTx	
32	4	10		424-6TTx
32	5	10		425-6TTx

**TURBO** click  
**TERMINAL**



415-6TTx

<b>with flange 100 x 112 - fixing center 80 x 88</b>				
63	3	2	433-6xs	
63	4	2		434-6xs
63	5	2		435-6xs
<b>with flange 120 x 130 - fixing center 100 x 108</b>				
125	3	2	443-6xs	
125	4	2		444-6xs
125	5	2		445-6xs

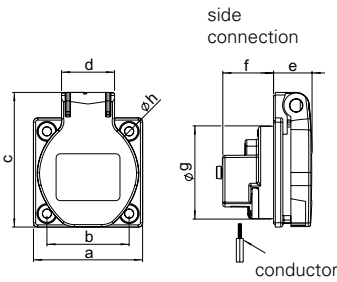


435-6xs



# Event technology MIDNIGHT-SERIES

## Socket outlet safety Austrian/German system

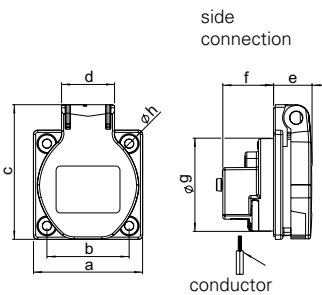


	• STANDARD •	
	16 Amp	
<b>Poles</b>	2P + E	
<b>Flange a</b> [mm]	50	
<b>Fixing center b</b> [mm]	38	
<b>c</b> [mm]	62	
<b>d</b> [mm]	25	
<b>e</b> [mm]	18	
<b>f</b> [mm]	24	
<b>g</b> [mm]	43	
<b>h</b> [mm]	4,2	
<b>Wire flexible</b> [mm <sup>2</sup> ]	1 - 2x2,5	
<b>Wire solid</b> [mm <sup>2</sup> ]	1 - 2x2,5	
<b>Contact screws</b> [Ncm]	80	
<b>Weight</b> [g]	45	

- with screw terminals
- housing material: PA6
- contacts: nickel-plated contacts

**IP54** splashproof

## Socket outlet safety Austrian/German system with sealing bulge



	• STANDARD •	
	16 Amp	
<b>Poles</b>	2P + E	
<b>Flange a</b> [mm]	50	
<b>Fixing center b</b> [mm]	38	
<b>c</b> [mm]	62	
<b>d</b> [mm]	25	
<b>e</b> [mm]	22	
<b>f</b> [mm]	24	
<b>g</b> [mm]	43	
<b>h</b> [mm]	4,2	
<b>Wire flexible</b> [mm <sup>2</sup> ]	1 - 2x2,5	
<b>Wire solid</b> [mm <sup>2</sup> ]	1 - 2x2,5	
<b>Contact screws</b> [Ncm]	80	
<b>Weight</b> [g]	45	

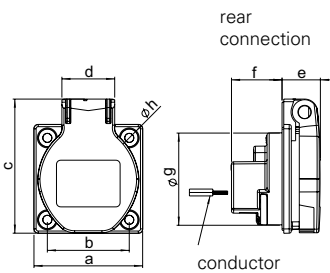
- with sealing bulge
- with screw terminals
- housing material: PA6
- contacts: nickel-plated contacts

**IP54** splashproof

only IPX4

\* Plugs and socket outlets for portable use are subject to the standard DIN VDE 0620-1:2010 and ÖVE/ÖNORM E 8684-2-2:2010

## Socket outlet safety French/Belgian system

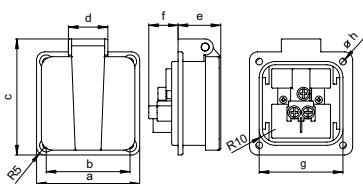


	• STANDARD •	
	16 Amp	
<b>Poles</b>	2P + E	
<b>Flange a</b> [mm]	50	
<b>Fixing center b</b> [mm]	38	
<b>c</b> [mm]	62	
<b>d</b> [mm]	25	
<b>e</b> [mm]	18	
<b>f</b> [mm]	24	
<b>g</b> [mm]	43	
<b>h</b> [mm]	4,2	
<b>Wire flexible</b> [mm <sup>2</sup> ]	1 - 2x2,5	
<b>Wire solid</b> [mm <sup>2</sup> ]	1 - 2x2,5	
<b>Contact screws</b> [Ncm]	80	
<b>Weight</b> [g]	45	

- with screw terminals
- housing material: PA6
- contacts: nickel-plated contacts
- with shutter

**IP54** splashproof

## Socket outlet safety British system



	13 Amp	13 Amp
<b>Poles</b>	2P + E	2P + E
<b>Flange a</b> [mm]	64	50
<b>Fixing center b</b> [mm]	52	38
<b>c</b> [mm]	72	54
<b>d</b> [mm]	25	25
<b>e</b> [mm]	26,5	18
<b>f</b> [mm]	18	22
<b>g</b> [mm]	52	35
<b>h</b> [mm]	4,2	4,5
<b>Weight</b> [g]	67	50

- with screw terminals
- housing material: PA6
- side connection

**IP54** splashproof



250V~

50/60Hz

Amp.	Poles	pack. unit	Abbreviations/Types	Cat.No.
16	3	100	<p><b>P-NOVA PLUS+</b></p> <p>flange: 50x50mm, fixing center: 38x38mm</p>	<b>1050-0ss</b>
16	3	100	<p><b>P-NOVA PLUS+</b></p> <p>flange: 50x50mm, fixing center: 38x38mm</p>	<b>1050-0ssw</b>
16	3	100	<p><b>P-NOVA PLUS+</b></p> <p>flange: 50x50mm, fixing center: 38x38mm <b>without shutter</b></p>	<b>1040-0s</b>
16	3	100	<p><b>P-NOVA PLUS+</b></p> <p>flange: 50x50mm, fixing center: 38x38mm <b>incl. shutter</b></p>	<b>1040-0sc</b>
13	3	100	flange: 64x64mm, fixing center: 52x52mm	<b>1020-0s</b>
13	3	100	flange: 50x50mm, fixing center: 38x38mm	<b>1020-5s</b>



1040-0s

1040-0s



1020-0s

1020-5s



# Event technology MIDNIGHT-SERIES

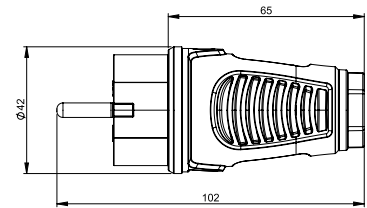
**TAURUS**  
Der Schutzkontaktstecker



## Safety plug Dual earthing system

- solid rubber version (TPE)
- internal strain relief
- contact carrier: TPE

IP54



**0522-ss**

pack.unit: 30

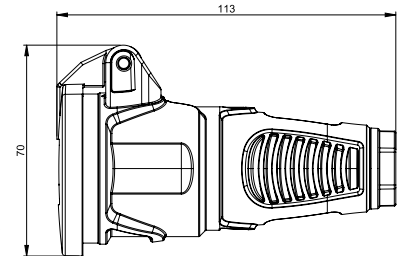
**TAURUS**  
Der Schutzkontaktstecker



## Safety connector with hinged lid Austrian/German system

- solid rubber version (TPE)
- internal strain relief
- contact carrier: TPE

IP54



**2522-ss**

pack.unit: 20

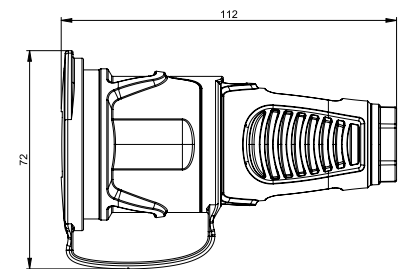
**TAURUS**  
Der Schutzkontaktstecker



## Safety connector with cap Austrian/German system

- solid rubber version (TPE)
- internal strain relief
- contact carrier: TPE

IP54



**2521-ss**

pack.unit: 20

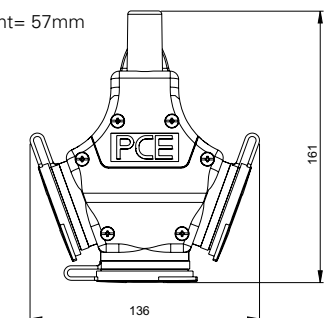


## 3-way connector rubber French/Belgian system

- with cap
- insert: polyamide

IP44 dust- and splashproof

Height= 57mm



**243711-ss**

with shutter **243711-ssc**

pack.unit: 5

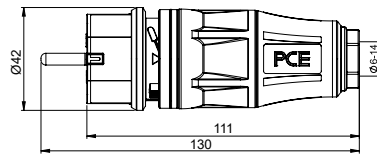
## Safety plug Dual earthing system

- with screwless cable gland
- rubberised surface
- insert: PA6

IP54 

**05721-ss**

pack.unit: 20





**TOPTAURUS<sup>2</sup>**  
Der Schutzkontaktstecker



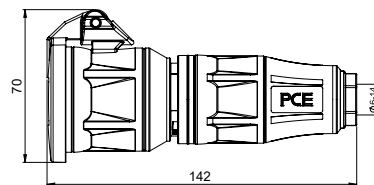
## Safety connector with hinged lid Austrian/German system or French/Belgian system

- with screwless cable gland
- optional: LED power indicator, shutter
- rubberised surface
- insert: PA6

IP54 

		
standard	<b>25712-ss</b>	<b>24712-ss</b>
+ shutter	<b>25712-ssc</b>	<b>24712-ssc</b>
standard + LED	<b>25732-ss</b>	<b>24732-ss</b>
+ LED + shutter	<b>25732-ssc</b>	<b>24732-ssc</b>

pack.unit: 10






**TOPTAURUS<sup>2</sup>**  
Der Schutzkontaktstecker



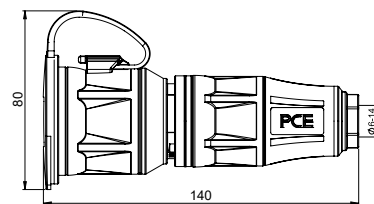
## Safety connector with cap Austrian/German system or French/Belgian system

- with screwless cable gland
- optional: LED power indicator, shutter
- rubberised surface
- insert: PA6

IP54 

		
standard	<b>25711-ss</b>	<b>24711-ss</b>
+ shutter	<b>25711-ssc</b>	<b>24711-ssc</b>
standard + LED	<b>25731-ss</b>	<b>24731-ss</b>
+ LED + shutter	<b>25731-ssc</b>	<b>24731-ssc</b>

pack.unit: 10




**TOPTAURUS<sup>2</sup>**  
Der Schutzkontaktstecker



## 3-way connector solid rubber Austrian/German system

- with hinged lid
- insert: rubber
- with screwless cable gland

IP54 dust- and splashproof 

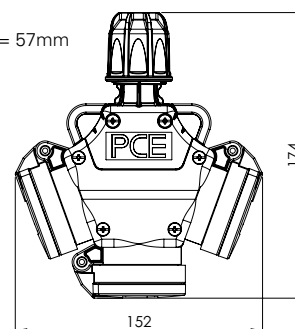


 with LED power indicator


<b>253822-ss</b>
<b>253842-ss</b>

pack.unit: 5

Height= 57mm



# Event technology MIDNIGHT-SERIES



## T-Connect

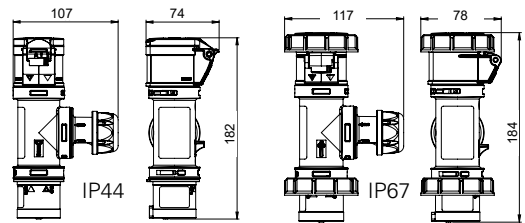
### Equipment:

- 1 CEE-plug 16A 3p 6h
- 1 CEE-socket 16A 3p 6h
- 1 cable exit  
(terminal block max. 3x2,5mm<sup>2</sup>)

- IP44** splashproof
- IP67** watertight

**94325000**  
**94326000**

pack.unit: 10



## T-Connect with cable

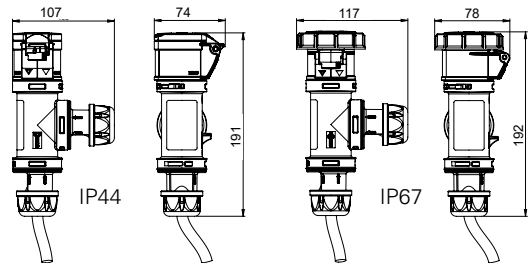
### Equipment:

- 1,5m cable H07RN-F 3G1,5 with CEE-plug 16A 3p 6h
- 1 cable entry  
(terminal block max. 3x2,5mm<sup>2</sup>)
- 1 CEE-socket 16A 3p 6h

- IP44** splashproof
- IP67** watertight

**94325001**  
**94326001**

pack.unit: 10



## T-Connect with cable entry

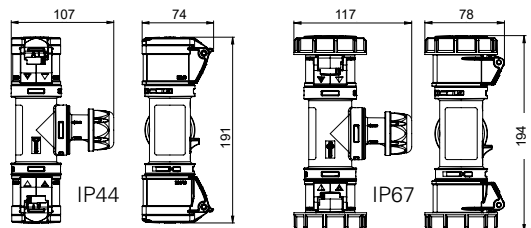
### Equipment:

- 1 cable entry  
(terminal block max. 3x2,5mm<sup>2</sup>)
- 2 CEE-sockets 16A 3p 6h outlet

- IP44** splashproof
- IP67** watertight

**94325002**  
**94326002**

pack.unit: 10



## T-Connect with CEE-plug

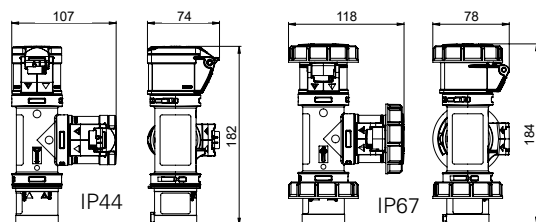
### Equipment:

- 1 CEE-plug 16A 3p 6h
- 2 CEE-sockets 16A 3p 6h outlet

- IP44** splashproof
- IP67** watertight

**94325003**  
**94326003**

pack.unit: 10



# H-CONNECT MIDNIGHT



## H-Connect

### CEE multiple socket

- incl. eyelet for velcro tape for mounting on round tubes
- housing material ABS
- contacts: brass nickel-plated

### Equipment:

- 1 CEE plug 16A 3p 6h
- 3 CEE socket 16A 3p 6h

IP44 splashproof

94327000

pack.unit: 5



optional: velcro tape



Eyelet for velcro tape



# Event technology MIDNIGHT-SERIES

## Compact distribution boxes Series St. Anton



9430052

- Plugs and sockets are black

**IP44** splashproof



9430053



9430054

### Entry:

1 CEE-plug 16A 5p 400V

### Outlet:

3 CEE-sockets 16A 5p 400V

**9430052**

1 CEE-socket 16A 5p 400V

**9430053**

2 safety sockets 16A 250V

3 CEE-sockets 16A 3p 230V

**9430054**

## Wall distribution boxes series Salzburg

Dimensions: HxWxD = 370x298x203mm



- for wall-fastening
- solid rubber enclosure, with protective roof
- window up to max. 14 modules
- bottom of box and cover connected with joint
- ready wired for connection

**IP54** dust- and splashproof

### Equipment:

1 CEE-socket 32A 5p 400V black

1 CEE-socket 16A 5p 400V black

2 safety sockets 16A 250V black

1xM32 on top, 1xM32 from bottom

### Protection:

1 MCB 32A 3p-C

1 MCB 16A 3p-C

2 MCBs 16A 1p-B

1 RCD 63/4/0,03A over all outlets

**92271649**

## Wall distribution boxes series Bruck

Dimensions: HxWxD = 370x370x203mm



- for wall-fastening
- solid rubber enclosure, with protective roof
- window up to max. 18 modules
- bottom of box and cover connected with joint
- ready wired for connection

**IP54** dust- and splashproof

### Equipment:

1 CEE-socket 32A 5p 400V black

2 CEE-sockets 16A 5p 400V black

4 safety sockets 16A 250V black

1xM32 on top, 1xM32 from bottom

### Protection:

1 MCB 32A 3p-C

2 MCBs 16A 3p-C

4 MCBs 16A 1p-B

1 RCD 63/4/0,03A over all outlets

**92401543**

## Mobile distribution boxes series Spitz

Dimensions: HxWxD = 320x320x320mm



- portable, handy solid-rubber mobile box-stackable
- lifting hinged cover with 2 quick acting closures
- maximum safety – closed casing bottom with high ground clearance
- ready wired for connection

**IP54** dust- and splashproof

### Equipment:

2 CEE-sockets 32A 5p 400V black

2 CEE-sockets 16A 5p 400V black

4 safety sockets 16A 250V black

2m cable H07RN-F 5G6 with

CEE-plug 32A 5p 400V black

### Protection:

2 MCBs 16A 3p-C

4 MCBs 16A 1p-B

1 RCD 63/4/0,03A over all outlets

**94741367**

## Mobile distribution boxes series Steyregg

Dimensions: HxWxD = 79x430x129mm



- portable, handy solid-rubber mobile box
- housing with carrying handle
- ready wired for connection

**IP54** dust- and splashproof

### Equipment:

2 CEE-sockets 16A 5p 400V black

2 safety sockets 16A 250V black

2m cable H07RN-F 5G4 with

CEE-plug 32A 5p 400V black

### Protection:

1 MCB 16A 3p-C

2 MCBs 16A 1p-C

**9441480**

## Series M-SVE3 63/11-12/V2/2M/A/MS

Dimensions: HxWxD = 340x400x350mm

- shock-resistant, robust and mobile insulated thermoplastic box
- very lightweight and handy
- stackable
- resistant to weather and ageing

**IP44** splashproof

### Equipment:

- 1 CEE-socket 16A 5p 400V black
- 1 CEE-socket 32A 5p 400V black
- 12 sockets (DIN 49440) 16A 250V black

Connection cable 44 kVA

2m cable 5G10 with CEE-plug 63A 5p 400V

### Protection:

- 1 MCB 16A 3p-C
- 1 MCB 32A 3p-C
- 12 MCBs 16A 1p-C
- 2 RCDs 63/0,03A

**853009286**



## Series M-SVE4 63/1-16/V17/G/E/A/MS

Dimensions: HxWxD = 340x560x350mm

- shock-resistant, robust and mobile insulated thermoplastic box
- very lightweight and handy
- stackable
- resistant to weather and ageing

**IP44** splashproof

### Equipment:

- 1 CEE-socket 16A 5p 400V black
- 16 sockets (DIN 49440) 16A 250V black

Connection cable 44 kVA

CEE-plug 63A 5p 400V black with cable loop in the entry

### Protection:

- 1 MCB 16A 3p-C
- 16 RCBOs 16A 1p-C/0,03A
- 1 RCD 40/0,03A

**854009285**



## Hinged windows IP54

- especially compact (robust) design, made of shock-resistant polycarbonate
- for distributor's construction, O.E.M's, panel builders etc.
- self-closing window
- size of hinged window suitable for 4, 6, 7, 8, 9, 10, 11, 12, 13, 14 and 18 modules
- angle of vee > 180°
- with integrated gasket for flange mounting
- integrated free position for lead seal
- color frame: black

**IP54** splashproof

unit	size	p.unit	Cat.No.
4	92x97mm	30	<b>9006504s</b>
6	128x97mm	20	<b>9006506s</b>
7	139x97mm	15	<b>9006507s</b>
8	164x97mm	15	<b>9006508s</b>
9	182x97mm	15	<b>9006509s</b>
10	200x97mm	10	<b>9006510s</b>
11	218x97mm	10	<b>9006511s</b>
12	236x97mm	10	<b>9006512s</b>
13	253x97mm	10	<b>9006513s</b>
14	272x97mm	10	<b>9006514s</b>
18	344x97mm	10	<b>9006518s</b>



## Hinged windows IP66/67

- especially compact (robust) design, made of shock-resistant polycarbonate
- for distributor's construction, O.E.M's, panel builders etc.
- sprung-loaded window with integrated knurled screws
- size of hinged window suitable for 2, 4, 5, 6, 7, 8, 9, 10, 12, 13, 18 modules
- with integrated gasket for flange mounting
- all metal parts corrosion-resistant
- color frame: black

**IP66/67** watertight

unit	size	p.unit	Cat.No.
2	49x93mm	40	<b>900602s</b>
4	85x93mm	20	<b>900604s</b>
5	103x93mm	20	<b>900605s</b>
6	121x93mm	15	<b>900606s</b>
7	139x93mm	15	<b>900607s</b>
8	157x93mm	15	<b>900608s</b>
9	175x93mm	15	<b>900609s</b>
10	193x93mm	15	<b>900610s</b>
12	229x93mm	10	<b>900612s</b>
13	247x93mm	10	<b>900613s</b>
18	337x93mm	12	<b>900618s</b>



# PCE

Connection  
to the future



[www.pcelectric.at](http://www.pcelectric.at)

**PC Electric GesmbH**

Diesseits 145

4973 St. Martin im Innkreis

AUSTRIA

TEL +43 7751 61220

FAX +43 7751 6969

office@pcelectric.at

Version 01/2024

No guarantee for technical changes  
or printing errors.

